

GULLIVER BS/M SERIES

The Riello Gulliver BS/M series of two stage, progressive or modulating gas burners, is a complete range of Low NOx emission products, developed to respond to any request for home heating, conforming to the most severe standards regarding the reduction of polluting emissions.

This series of burners is available in three different models with an output ranging from 49 to 250 kW, divided in three different structures.

All the models use the same components designed by Riello for the Gulliver series. The high quality level guarantees safe working.

In developing these burners, special attention was paid to reducing noise, the ease of installation and adjustment, to obtaining the smallest size possible to fit into any sort of boiler available on the market.

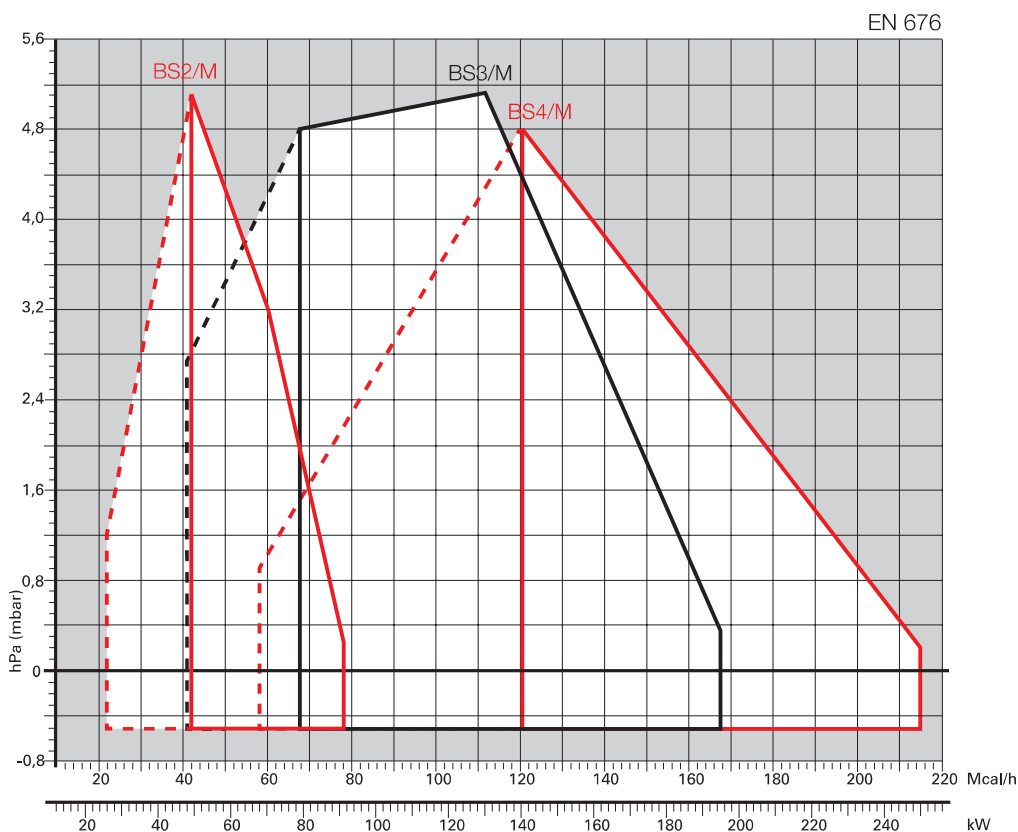
Two stage operation guarantees high level performance from the thermal unit. All the models are approved by the EN 676 European Standard, conform to European Directives, Gas Appliance, EMC, Low Voltage, Boiler Efficiency.

All the Gulliver BS/M burners are tested before leaving the factory.



BS2/M	26/49 ÷ 91 kW
BS3/M	48/79 ÷ 195 kW
BS4/M	68/140 ÷ 250 kW

FIRING RATES



Useful working field for choosing the burner



Modulation range

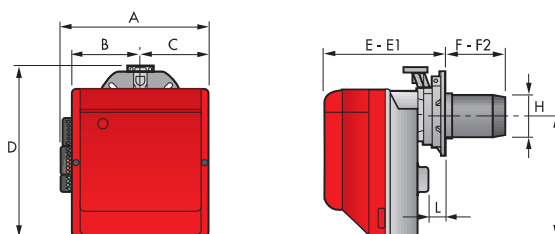
Test conditions conforming to EN676
 Temperature: 20°C
 Pressure: 1013,5 mbar
 Altitude: 0 m a.s.l.

Low NOx Two Stage Progressive and Modulating Gas Burners

GULLIVER BS/M SERIES

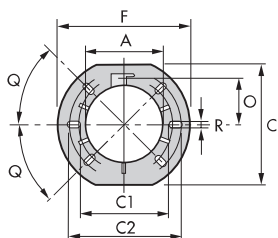
Overall dimensions (mm)

BURNER



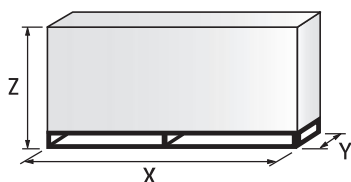
MODEL	A	B	C	D	E	E1	F	F2	H	I	L
▶ BS2/M	285	125,5	125,5	325	238	252	114	100	106	230	46
▶ BS2/M TL	285	125,5	125,5	325	238	252	184	170	106	230	46
▶ BS3/M	330	150	150	391	262	280	128	110	129	285	46
▶ BS3/M TL	330	150	150	391	262	270	285	267	129	285	45
▶ BS4/M	330	150	150	392	278	301	168	145	137	286	46
▶ BS4/M TL	330	150	150	392	278	301	325	302	137	286	46

BURNER - BOILER MOUNTING FLANGE



MODEL	A	C	C1	C2	F	O	Q	R
▶ BS2/M	106	167	140	170	192	66	45°	11
▶ BS2/M TL	106	167	140	170	192	66	45°	11
▶ BS3/M	129	201	160	190	216	76,5	45°	11
▶ BS3/M TL	129	201	160	190	216	76,5	45°	11
▶ BS4/M	137	203	170	200	218	80,5	45°	11
▶ BS4/M TL	137	203	170	200	218	80,5	45°	11

PACKAGING



MODEL	X	Y	Z	kg
▶ BS2/M	405	328	375	12
▶ BS2/M TL	583	318	365	14
▶ BS3/M	450	375	440	16
▶ BS3/M TL	510	375	440	18
▶ BS4/M	510	375	440	18
▶ BS4/M TL	610	383	367	20

Low NOx Two Stage Progressive and Modulating Gas Burners

GULLIVER BS/M SERIES

Available models

Burners

CODE	MODEL		HEAT OUTPUT		TOTAL ELECTRICAL POWER (kW)	CERTIFICATION	NOTE
			(kW)	NATURAL GAS (Nm ³ /h)			
3762250	BS2/M	1/230/50	26/49 - 91	2,6/4,9 - 9,1	0,180	CE - 0085 BN0609	(1)
20052610	BS2/M TL	1/230/50	26/49 - 91	2,6/4,9 - 9,1	0,180	CE - 0085 BN0609	(1)(2)
3762350	BS3/M	1/230/50	48/79 - 195	4,8/7,9 - 19,5	0,350	CE - 0085 BN0609	(1)
3762370	BS3/M TL	1/230/50	48/79 - 195	4,8/7,9 - 19,5	0,350	CE - 0085 BN0609	(1)(2)
3762450	BS4/M	1/230/50	68/140 - 250	6,8/14 - 25	0,530	CE - 0085 BN0609	(1)
20052613	BS4/M TL	1/230/50	68/140 - 250	6,8/14 - 25	0,530	CE - 0085 BN0609	(1)(2)

Net calorific value G20: 10 kWh/Nm³ - Density: 0,71 kg/Nm³.

The burners of BS/M series are in according to EN 676.

(1) With plug and socket.

(2) Head Length: see quote F-F2 in the Overall Dimensions table.

Gas Trains

GAS TRAIN CODE *	GAS TRAIN MODEL	NATURAL GAS		LPG		NOTE
		BURNER (type)	ADAPTER (code)	BURNER (type)	ADAPTER (code)	
3970587	CG 120/P - F2SM 02	BS2/M		BS2/M		(1)
3970588	CG 220/P - F3SM 02	BS3/M - BS4/M		BS3/M - BS4/M		(1)

Please see Designation of Gas Train Series in the page before the Catalogue index.

* Gas trains are 230V/50Hz - 220V/60Hz electrical supply.

(1) With installed plug.

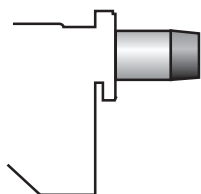
The valve seal control device is compulsory (conforming to EN 676) on gas trains to burners with a maximum output over 1200 kW.

To select the gas train please refer to the technical data leaflet and/or instruction manual.

GULLIVER BS/M SERIES

Burner accessories

Extended head kit



Burners standard head can be transformed into "extended head" versions by using the special kit. Here the KITS available for the various burners are listed, showing the original and the extended lengths.

BURNER	STANDARD HEAD LENGTH (mm)	EXTENDED HEAD LENGTH (mm)	KIT CODE
▶ BS2/M (long)	100 ÷ 114	170 ÷ 180	3002722
▶ BS2/M (extra long)	100 ÷ 114	270 ÷ 280	3002723
▶ BS3/M	110 ÷ 128	267 ÷ 282	3002724
▶ BS4/M	145 ÷ 168	302 ÷ 317	3002725

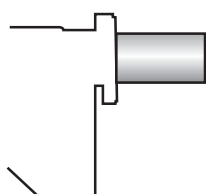
LPG kit



For burning LPG gas, a special kit is available to be fitted to the combustion head on the burner, as shown in this table.

BURNER	KIT CODE FOR STANDARD HEAD	KIT CODE FOR EXTENDED HEAD
▶ BS2/M	3002711	3002711
▶ BS3/M	3002712	3002712
▶ BS4/M	3001011	3001011

Alternative combustion head kit



To extend the adaptability of Gulliver BS/M burners to any sort of application, alternative combustion heads have been developed, for example, to overcome situations of combustion instability which could arise with certain heat generators. These heads cause a very limited increase in NOx emissions, due to the slower air flow.

BURNER	KIT CODE
▶ BS2/M	3001064
▶ BS3/M	3001060
▶ BS4/M	3001070

Ground fault interrupter kit



A "Ground fault interrupter kit" is available as a safety device in case of electrical system fault.

BURNER	KIT CODE
▶ BS2/M – BS3/M – BS4/M	3001180

7-pin plug kit

If necessary a 7-pin plug kit is available (in packaging of n. 5 pieces).

BURNER	KIT CODE
▶ BS2/M – BS3/M – BS4/M	3000945

Low NOx Two Stage Progressive and Modulating Gas Burners

GULLIVER BS/M SERIES

Burner accessories

Accessories for modulating operation



To obtain modulating operation, the BS/M series of burners requires a regulator with three point outlet controls. The following table lists the accessories for modulating operation with their application range.

BURNER	REGULATOR TYPE	REGULATOR CODE
► BS2/M – BS3/M – BS4/M	RWF 40	301078



The relative temperature or pressure probes fitted to the regulator, must be chosen on the basis of the application.

BURNER	PROBE TYPE	RANGE (°C) (bar)	PROBE CODE
► BS2/M – BS3/M – BS4/M	Temperature PT 100	-100 ÷ 500°C	3010110
	Pressure 4 ÷ 20 mA	0 ÷ 2,5 bar	3010213
	Pressure 4 ÷ 20 mA	0 ÷ 16 bar	3010214



Depending on the servomotor fitted to the burner, a three-pole potentiometer (1000 Ω) can be installed to check the position of the servomotor.

BURNER	POTENTIOMETER KIT CODE
► BS2/M – BS3/M – BS4/M	3010109

PC interface kit



To connect the control box to a personal computer for the transmission of operation, fault signals and detailed service information, an interface adapter with PC software are available.

BURNER	KIT CODE
► BS2/M – BS3/M – BS4/M	3002719

Gas train accessories

Seal control kit



To test the valve seals on the gas train, a special "seal control kit" is available.

GAS TRAIN	KIT CODE
► CG/P type	20021563